


# Developing youth work in Westfield and Radstock

Presentation to Development and Scrutiny Panel, 13 September 2016



Providing positive activities, advice and support  
to young people who need it the most

# Youth Connect – commissioned to help young people to be:

- Emotionally resilient
- Healthy
- Engaged in education, employment or training
- Safe

Providing positive activities, advice and support to young people who need it the most

# Youth Connect – commissioned to provide:

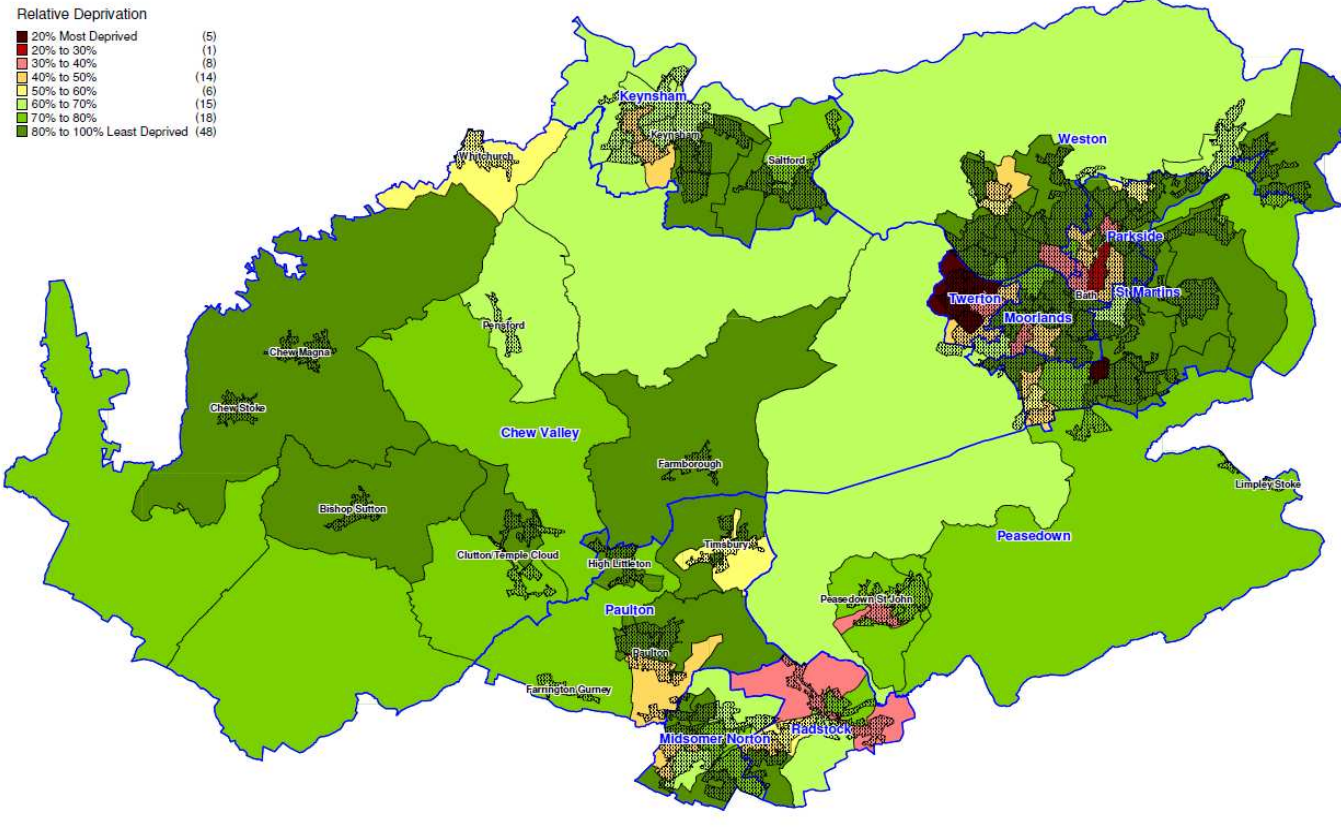
- Open access youth work
- Targeted interventions
- Statutory monitoring
- Support to other sectors to develop positive activities and support.

Providing positive activities, advice and support to young people who need it the most

# Index of Multiple Deprivation (IMD) 2010



Bath & North East  
Somerset Council



Providing positive activities, advice and support  
to young people who need it the most

# 220 young people's views in 2011: 'Have Your Say' highlighted:

Transport issues – access and cost  
Sometimes feeling unsafe after dark  
Need for improvements e.g. pavements, lighting  
Access issues for disabled young people  
Not enough 'interesting activities'

Providing positive activities, advice and support  
to young people who need it the most

# Developing a vision:

- Establishing a Youth Council
- Range of services including open access youth work and targeted support
- Multi-purpose shared facility for youth and community

Providing positive activities, advice and support to young people who need it the most

# Building on work of Radstock Youth Partnership, we will

- Consult with young people
- Scope model(s) of delivery
- Work in partnership
- Support voluntary / community sector to lead

Providing positive activities, advice and support to young people who need it the most